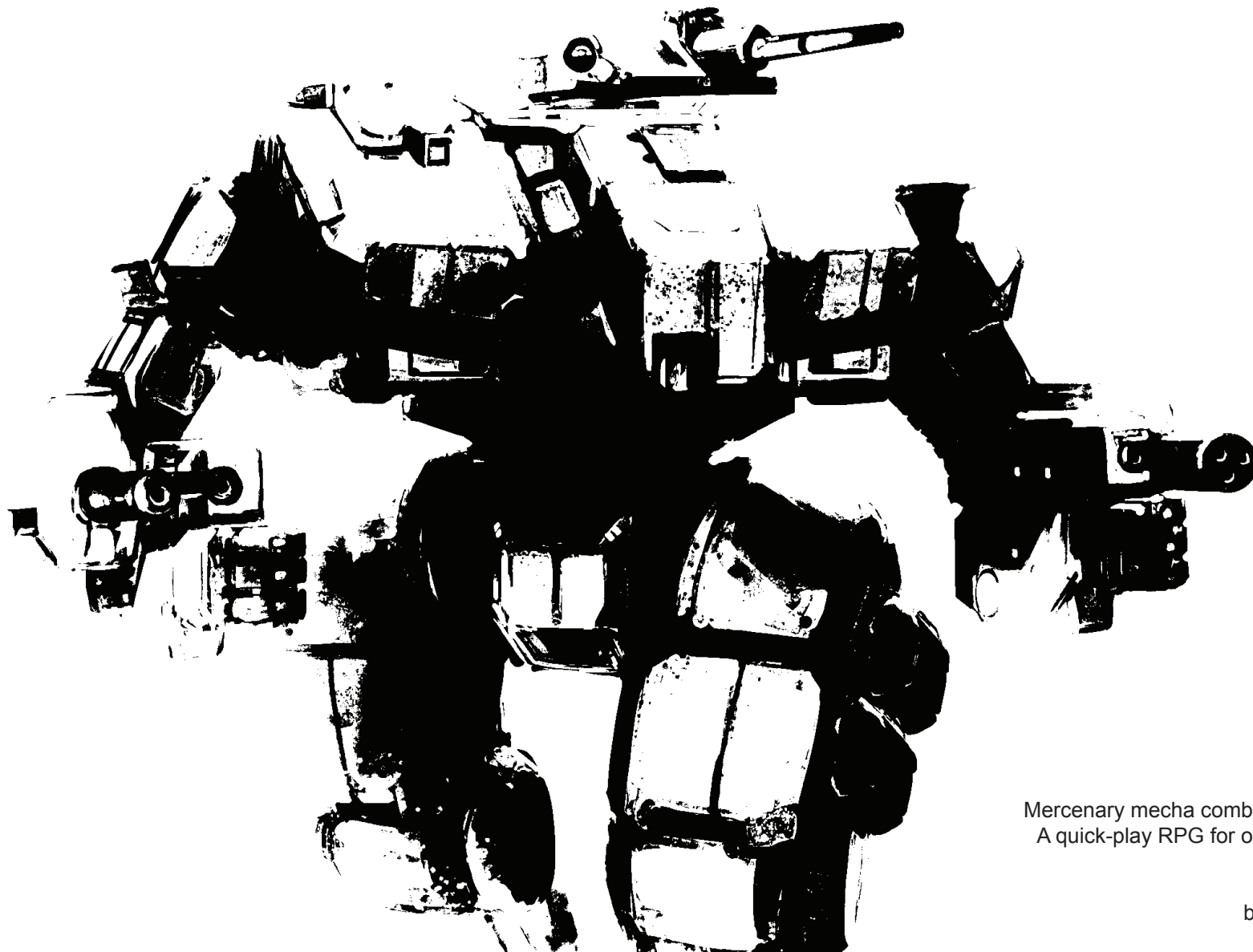

TOO GOOD TO BE TRUE

version 0.10



Mercenary mecha combat in a gritty future.
A quick-play RPG for one-shots and short
campaigns.

by Michael Prescott

PREPARING TO PLAY

STARTING OUT

Player characters are members of a mecha mercenary company. Each is the inheritor of a centuries-old combat mech, a relic of a bygone era of advanced battlefield technology.

COMPANY NAME

When you start play, choose a name for the mercenary company.

STARTING ASSETS

When you **start play**, roll 2d6 to determine the company's assets and reputation:

2D6	STARTING DETAILS
2-3	None. You'll have to hire dropships to get to the action. Reputation -1.
4-8	Regent dropship with 2 unknown quirks. Reputation -1.
9-10	Troll dropship, 2 quirks, Reputation 0
11-12	Troll dropship, Reputation 0.

CHARACTERS

Players should each choose a different playbook as their character: Mercenary, Hotshot, Veteran, Rigger, Lieutenant, Commander, Prodigy. It's okay to double up on the first few playbooks.

Follow the character creation instructions on the playbook.

HISTORY

All mercenaries start with history with one other mercenary company. Roll on the Other Merc Company table to determine which, then roll on the History table to determine the nature of the relationship with them.

MECH ASSIGNMENTS

When you **recruit a new mercenary** to join the company (i.e. a player creates a character), roll 2d6 +Reputation.

On a miss (6 or less), they get their playbook's default mecha (or exo armor if they prefer). On a hit (7+), they can choose any

2D6	OTHER MERC COMPANY
2	The Only Way [to be Sure]
3	Shell Shockers
4	Astrid's Own
5	"The Mobile Infantry"
6	Johnny's Metal Hand
7	Harrison's Hussars
8	"Sol Quarantine"
9	Red Company
10	Condoterri Bros
11	Báilián
12	Breyer & Associates

2D6	HISTORY
2	You stole something valuable from them (e.g. your mech). They're gonna want it back.
3	They stole something valuable from you (e.g. your previous mech).
4	Former employer, went bad after the Scarol II evac.
5	Always up in your shit.
6	Former mentors, would rather talk about old times than get shit done.
7	Have a knack for working for the other side
8	Friendly rivalry, but tend to underbid you. Costs you 1-cash/mission when they're in the same theater.
9	Wouldn't let you join, back when you sucked. They still think you suck.
10	They'll only talk to you through lawyers.
11	They wanna <i>be</i> you, it's embarrassing.
12	They have sworn to kill you at all costs. (Who did you kill?)

mech without the *expensive* tag. On a 10+, choose: an *expensive* mech, or an extra mech equipment option.

For a quick start, each character starts with the default mech for their playbook.

If you are playing a multi-session campaign, follow the instructions on the **mercenary company sheet**.

THEATRE DEPLOYMENT

The players must choose a *theatre of war*, an ongoing conflict to which their mercenary company is attached. Not all theaters are available to starting companies.

PLAYING

As in most RPGs, the GM describes the fictional situation around the characters. The players say how they react: what they say, do, or try to do. The GM says what happens next.

RULES

The core rules are presented as short, self-contained procedures which apply in specific situations.

Play free-form until a rule applies. When it does, follow the rule's instructions, and interpret the results in the context of the current fictional situation.

Players should not treat rules as a *list of things they can do* (this will make the game suck). The game works best when players are putting their characters in situations where the rules are relevant.

ROLLING DICE

Most die rolls are 2d6 plus a pilot stat or mecha attribute. Commonly, a roll of 6 or less is a miss, a failure condition which the GM will interpret to mean something bad happens. A roll of 7+ is a hit: the PC gets what they wanted, but seldom without some complication. A 10+ is a clean break.

THE SWEET SPOT

The GM will vary the pace and detail of play to keep the game focused on the action in and around combat missions.

Friction and conflict comes from contact with the enemy (of course), but also from the fog of war, conflicting priorities (or even loyalties) of allies, the scarcity of supplies, munitions and repair opportunities. Not to mention, straight-up shitty luck.

Play can explore other kinds of conflicts or aspects of the setting, but you're on your own.





BATTLE

TACTICS

HARDWARE

COMMAND

HARM

strain / out / dead

|

EXPERIENCE

Mark experience when you miss, or when a rule tells you to.

ADVANCEMENTS

- +1 to a stat (max +3)
- Add a playbook special
- Take a special from another playbook
- Retire and get out of the game

HISTORY

MERCENARY

Choose a name/lineage/background/look:

Name: Selene / Marsen / N'dela / Ajani / Per-
ahta / Hanke / Anouk / Liis-Albano / France /
Aaron / Leo / Eliška

Lineage: Concordat / Dendrite / Factori /
Earth / Roosts / Holdborn / Cysts

Background: promoted exo / base brat /
tank rat / prestige academy / sim-baby

Look: stained / vat-fresh / androgynous /
reconstructed / fatale / beefy / inked

STATS

Battle +2. Assign +1, +0, -1 to the others.

SPECIAL

Choose two:

- Steel guts:** When you head into enemy fire to get the job done, mark xp.
- Shock trooper:** When you're shooting, you count as two units when figuring out who's outnumbered.
- Close quarters specialist:** When you assault with *initiative*, you may use the nearest enemy mecha as 2-cover from the others.
- Thug:** Mecha physical combat doesn't count as pushing your hardware.
- Forward observer:** When you assess from concealment, your allies take +AOF.
- Trigger happy:** In your hands, all armaments have *repeater*.
- 'Till it glows:** When you **assault**, all your weapons gain *tandem*. Push your hardware to avoid a system shutdown from excess heat.
- Tough as nails:** Gain 1-grit, which works like armor against harm.

MAULER

The M309 'Mauler' general strike mecha was mass manufactured for export all along the Selenberg Dendrite. Few units still have the original lasers, but they are popular with riggers for their reliability and easy field maintenance.

Speed +1, Profile 0. Choose two options.

ARMAMENT

- Ceres **40mm AC** (3d near/far)
- Insight-2 **Dual Laser** (2d near/extreme free advanced)
- Wolfpack SR-78 **Rocket Pod** (2d near obvious salvo/6)
- Coaxial **MG** (1d near free repeater)

ARMOR

- Granulated composites (1-armor)
- Series II Symmetric Foam (2-armor advanced)

AUXILIARY

- Smoke dispenser (1-armor)
- Albedo cloud (2-armor vs lasers, advanced, munition)
- Grafted subsystem from another model
- Grafted subsystem from another model

QUIRKS



SPEED

PROFILE

MUNITIONS

DAMAGE

external | critical hits | disabled

||

CRITICAL DAMAGE

- Armament disabled (choose)
- Auxiliary system disabled (choose)
- Cockpit fire (harmful, ongoing)
- Power plant casing crack spews black smoke, -1 Profile/Speed
- Power failure, system shutdown
- Ammunition explosion (2-damage 2d area messy)



HOTSHOT

Choose a name/lineage/background/look:

Name: Selene / Marsen / N'dela / Ajani / Per-
ahta / Hanke / Anouk / Liis-Albano / France /
Aaron / Leo / Eliška

Lineage: Concordat / Dendrite / Factori /
Earth / Roosts / Holdborn / Cysts

Background: promoted exo / base brat /
tank rat / prestige academy / sim-baby

Look: stained / vat-fresh / androgynous /
reconstructed / fatale / beefy / inked

STATS

Battle +2. Assign +1, 0, -1 to the others.

SPECIAL

Choose two:

- Hotshot:** When you **bail on the plan** and abandon *cohesion* to do your own thing, mark xp and +1 to your next roll.
- Headhunter:** When you shoot with *initiative*, +AOF.
- Slippery:** When you are on the move, incoming fire is -AOF.
- Return Fire:** When you **take fire from unseen attackers**, you may return fire anyways.
- Incoming!:** When your **squad assaults**, you may join in from engagement range.
- Sure Footed:** When you **race through rough terrain**, +1 speed.

BATTLE

TACTICS

HARDWARE

COMMAND

HARM

strain / out / dead

| |

EXPERIENCE

Mark experience when you miss, or when a rule tells you to.

ADVANCEMENTS

- +1 to a stat (max +3)
- Add a playbook special
- Take a special from another playbook
- Retire and get out of the game

HISTORY

RAIDER

The RCR-7 (rapid close/recon) 'Raider' was Amber Dyanmics' final export production mecha. The much sought-after RCR-9 added additional stealth features, but only existed as a limited prototype run.

Speed +2, Profile +1. Choose one option.

ARMAMENT

- Aeon Systems **21mm AC** (2d near/far repeater)
- Nightmare-3 **Missile Launcher** (3d far/extreme slow munition)

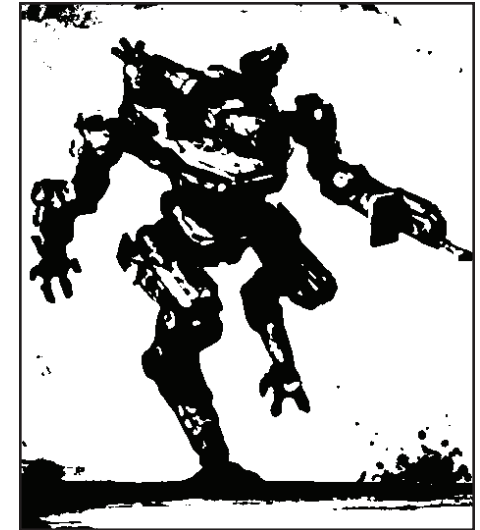
ARMOR

- Anti-ballistic cladding (0-armor)
- Assault panels (1-armor)

AUXILIARY

- Jump system (obvious, munition)
- Coaxial splintergun (6d AP near munition)
- Extended range pack (+2 Munitions)
- Shielded comms (+1 Profile) [RCR-9]
- Heat dispersion system (+1 Profile advanced) [RCR-9]
- Camdrones** (munition): When you recon a dug-in enemy, squaddies take +1 forward to an assault.
- Grafted subsystem from another model

QUIRKS



SPEED

PROFILE

MUNITIONS

DAMAGE

external | critical hits | disabled

| |

CRITICAL DAMAGE

- Armament destroyed (choose)
- Auxiliary system destroyed (choose)
- Auxiliary power kicks in, -1 speed
- Cockpit spidered, +1 harm, -1 forward
- Hip servo (immobile)
- Jump system detonates, +1 harm



BATTLE

TACTICS

HARDWARE

COMMAND

HARM

strain / out / dead

|

EXPERIENCE

Mark experience when you miss, or when a rule tells you to.

ADVANCEMENTS

- +1 to a stat (max +3)
- Add a playbook special
- Take a special from another playbook
- Retire and get out of the game

HISTORY

VETERAN

Choose a name/lineage/background/look:

Name: Selene / Marsen / N'dela / Ajani / Per-
ahta / Hanke / Anouk / Liis-Albano / France /
Aaron / Leo / Eliška

Lineage: Concordat / Dendrite / Factori /
Earth / Roosts / Holdborn / Cysts

Background: promoted exo / base brat /
tank rat / prestige academy / sim-baby

Look: stained / vat-fresh / androgynous /
reconstructed / fatale / beefy / inked

STATS

Assign +2, +1, 0, -1 to your stats.

SPECIAL

Choose two:

- Pessimist:** When you burn 2 or more
SNAFU on one roll, mark xp.
- Lifer:** You have *history* with 2 companies
instead of 1.
- Make 'em count:** When you *assault*,
spend less 1 munition.
- Deja Vu:** When you **think you've been
here before**, roll +Tactics. On a hit, find
2-cover and say what it is. On a 10+,
take +1 to disengage.
- Gut feeling:** You can assess nearby
enemy strength or objectives from the
flimsiest evidence.
- It's a goddamn trap:** When you **predict
what total clusterfuck happens**, burn
1-SNAFU.
- Final protective fire:** When you
stand your ground to cover retreating
squaddies, take +1.
- Full share:** When a **mission pays out**,
you get 1-cash of your own.

HELLHOUND

The Koral Armaments Hellhound is one of
the heaviest mechs still in active service.
Originally a front-line assault mech, later pre-
CBE variants had adapted the chassis to an
assault-support artillery role.

Speed 0, Profile +1. Choose one option.

ARMAMENT

- Twin 15mm AC** (2 x 1d near/far repeater)
- Longbow Missile** (4d extreme slow
indirect munition messy)
- Saturator Long Gun** (6d extreme messy
area slow 2-munition advanced)
- Flame-thrower** (1d/6dAP tight area
messy omni)

ARMOR

- Tensioned Ceram** (1-armor)
- Reinforced back** (2-armor in assaults)

AUXILIARY

- Dual turbine power plant** (+1 speed)
- Magellan NNX targeting gear** (+1 AOF to
spotted indirect fire)
- Smoke dispenser** (1-armor)
- Albedo cloud** (2-armor vs lasers,
advanced, munition)
- Grafted subsystem from another model**
- Grafted subsystem from another model**

QUIRKS



SPEED

PROFILE

MUNITIONS

DAMAGE

external | critical hits | disabled

||

CRITICAL DAMAGE

- Armament destroyed** (choose)
- Auxiliary system destroyed** (choose)
- Auxiliary power kicks in** (-1 speed)
- Cockpit fire** (harmful, ongoing)
- Cockpit spidered**, +1 harm, -1 forward
- Knee servo** (*push hardware* on rough
terrain, -1 speed)
- Power plant casing crack** spews black
smoke (-1 profile, -1 speed)
- Ammunition explosion** (2-damage 2d
area messy)



BATTLE

TACTICS

HARDWARE

COMMAND

HARM

strain / out / dead

|

EXPERIENCE

Mark experience when you miss, or when a rule tells you to.

ADVANCEMENTS

- +1 to a stat (max +3)
- Add a playbook special
- Take a special from another playbook
- Retire and get out of the game

HISTORY

RIGGER

Choose a name/lineage/background/look:

Name: Selene / Marsen / N'dela / Ajani / Per-
ahta / Hanke / Anouk / Liis-Albano / France /
Aaron / Leo / Eliška

Lineage: Concordat / Dendrite / Factori /
Earth / Roosts / Holdborn / Cysts

Background: promoted exo / base brat /
tank rat / prestige academy / sim-baby

Look: stained / vat-fresh / androgynous /
reconstructed / fatale / beefy / inked

STATS

Hardware +2. Assign +1, +1, 0 to the others.

SPECIAL

Choose two:

- Combat rigger:** when you expose yourself to danger to aid a damaged squaddie, *mark xp*.
- Repair link:** when you attach to damaged mecha, roll +hardware. On a hit, provide a temporary damage point (max 1). On a 10+, you bring a critically damaged system back online for the rest of the mission.
- Kick it:** When you force-restart a critically damaged system, it just works. +SNAFU.
- Emergency override:** When you **remotely control a squad mech** whose pilot is *out* or *dead*, make all rolls at -1.
- Alert:** When your squad's mecha are up for repairs, you choose the good techs. All mechs get 1-damage repair extra.
- Hacksaw:** When you spend downtime to graft a salvaged subsystem onto another mecha, roll +hardware and spend 1-supply. On a hit, it's attached. On a 10+, there's no new *quirk*.
- Right where it hurts:** When you **do critical damage** to a mech or vehicle model you're familiar with at near range or less, it's disabling.

GARGOYLE

Modular close support mech.

Speed +1, Profile 0. Choose two options.

ARMAMENT

- Twin **18mm RAC** (2d near/far repeater)
- Maintenance claw (3d tight free)
- SKP **missile pod** (4d extreme AA one-shot fast)

ARMOR

- Alliance Carbon (0-armor)
- You just welded all that on?** (1-armor)

AUXILIARY

- Modular chassis: grafting always works. Overhauling costs 0-supply.
- Salvage lance** (3d tight)
- Field re-arming package:** When you rearm a squaddie, give them munitions and roll +hardware. On a 7+, it's quick. On a 10+, you brought lots, they get +1 munition.
- Maintenance scanner:** You may assess the internal systems of visible mecha.

- ROVER:** Remote-operated maintenance mini-rover (Speed +2, Profile +2, 2-dmg, 1-armor, take no action while controlling it.)
- Grafted subsystem from another model.
- Grafted subsystem from another model.

QUIRKS



SPEED

PROFILE

MUNITIONS

DAMAGE

external | critical hits | disabled

||

CRITICAL DAMAGE

- Armament destroyed (choose)
- Auxiliary system destroyed (choose)
- Auxiliary power kicks in (-1 speed)
- Cockpit fire (harmful, ongoing)
- Cockpit spidered, +1 harm, -1 forward
- Knee servo (*push hardware* on rough terrain, -1 speed)
- Power plant casing crack spews black smoke (-1 profile, -1 speed)



BATTLE

TACTICS

HARDWARE

COMMAND

HARM

strain / out / dead

--	--	--	--	--	--	--

EXPERIENCE

Mark experience when you miss, or when a rule tells you to.

--	--	--	--	--	--	--	--

ADVANCEMENTS

- +1 to a stat (max +3)
- Add a playbook special
- Take a special from another playbook
- Retire and get out of the game

HISTORY

LIEUTENANT

Choose a name/lineage/background/look:

Name: Selene / Marsen / N'dela / Ajani / Per-
ahta / Hanke / Anouk / Liis-Albano / France /
Aaron / Leo / Eliška

Lineage: Concordat / Dendrite / Factori /
Earth / Roosts / Holdborn / Cysts

Background: promoted exo / base brat /
tank rat / prestige academy / sim-baby

Look: stained / vat-fresh / androgynous /
reconstructed / fatale / beefy / inked

STATS

Command +2. Assign +1, 0, -1 to the others.

SPECIAL

Choose two:

- Harsh lessons:** When your orders get a squad mech disabled, mark xp.
- Move up!** When you order a squaddie into danger, they take +1 to their next roll.
- This way!** When you lead your squad along a daring short cut, +1 SNAFU and roll +tactics. On a hit, you're there. On a 10+, no +1 SNAFU and take +1 to the engagement roll.
- Insistent:** When you fight for your squad's needs during downtime, roll +command. On a hit, hold 1, on a 10+, 2. Spend hold 1-for-1 for:
 - An extra 1-damage repair per mech
 - An extra critical repair attempt
 - -1 SNAFU
- Shrewd:** When you rely on your allies, take +1 to the roll.
- Snap out of it!** When you command a strained or unconscious squaddie, mark 1-harm. They recover 2-harm.
- Big picture:** When you pore over your squad's data feeds, you may assess the area around the whole squad.

IGUANA

Roost high-tech tank, made before the Ses-
sen arm fell in the Factori wars.

Speed +2, Profile +1.

Choose two options.

ARMAMENT

- HVDS Railgun (4d far/ex advanced)
- Sancor 20mm AC (3d near/far repeat)
- OWL 0.6GJ pulse laser (1d far/ex repeat munition)
- SKP missile pod (4d extreme AA one-shot fast)

ARMOR

- Talos Ceramics 8cm A3 (1-armor)
- Anti-projectile REACT skirt (+1 armor munition)

AUXILIARY

- Second crew station. When crewed, the Iguana assaults with two weapon systems, and may give suppression fire while booting it.
- Exo ride-along handles (for 4, -1 Speed when 3+ aboard).
- Ballistics μ-sight package: When the Iguana takes weapons fire, it may instantly return fire at reduced AOF.
- Grafted subsystem from another model

QUIRKS



SPEED

PROFILE

MUNITIONS

--	--	--	--	--	--	--	--

DAMAGE

external | critical hits | disabled

--	--	--	--	--	--	--	--	--	--	--

CRITICAL DAMAGE

- Armament destroyed (choose)
- Auxiliary system destroyed (choose)
- Auxiliary power kicks in (-1 speed)
- Cockpit fire (harmful, ongoing)
- Cockpit spidered, +1 harm, -1 forward
- Knee servo (push hardware on rough terrain, -1 speed)
- Power plant casing crack spews black smoke (-1 profile, -1 speed)
- Ammunition explosion (2-damage 2d area messy)



BATTLE

TACTICS

HARDWARE

COMMAND

HARM

strain / out / dead

 | |

EXPERIENCE

Mark experience when you miss, or when a rule tells you to.

ADVANCEMENTS

- +1 to a stat (max +3)
- Add a playbook special
- Take a special from another playbook
- Retire and get out of the game

HISTORY

COMMANDER TROLL

Choose a name/lineage/background/look:

Name: Selene / Marsen / N'dela / Ajani / Per-
ahta / Hanke / Anouk / Liis-Albano / France /
Aaron / Leo / Eliška

Lineage: Concordat / Dendrite / Factori /
Earth / Roosts / Holdborn / Cysts

Background: promoted exo / base brat /
tank rat / prestige academy / sim-baby

Look: stained / vat-fresh / androgynous /
reconstructed / fatale / beefy / inked

STATS

Command or Tactics +2. Assign +1, +1, 0 to
the others.

SPECIAL

Choose two:

- Big picture:** When you **sacrifice individual needs** for the good of the company, mark xp.
- Connected:** Establish *history* with 3 companies, not 1.
- Fuck it:** When you **risk the entire mission or the company** to achieve something, burn SNAFU.
- Wasn't born yesterday:** When you **spot insignias**, take +1 to the roll.
- Make 'em pay:** When you **announce a squaddie's death** over comms, everyone takes +AOF for the rest of the mission.
- Eye for talent:** When you **recruit a new company member**, they take +1 to the starting mech roll (max +3).
- New orders:** When you **reveal the real mission**, earn 1-SNAFU and roll +Command. On a hit, roll twice on any one mission table and take your pick. On a 10+, you don't need to betray anyone.

Originally a Roost battleship component, Sylent trans-orbital lifters were soon adapted for standalone use. By the end of C25, knockoffs were built everywhere.

Speed -1, Profile -1. Choose one option:

ARMAMENT

- Sylent 'Ringfire' **Plasma Cannon** (3d far omni)
- 'Harbinger' **Missile** (4d extreme slow indirect obvious munition messy)
- Splintergun array (6d AP near free omni)

ARMOR

- Trans-orbital shielding (2-armor)
- Assault panels (+1 armor)

AUXILIARY

- Trans-orbital lifter (munition, 2-munition to ascend)
- Huge (expensive, hauls 2-supply)
- Mecha bay (4 berths, 1 door)
- TO-3C:** 2nd mecha bay door, 5th mecha berth
- TO-3F:** Extended range pack (+2 munitions)
- Geoscan optics (assess from orbit)
- 'Hound' drone salvage hoversled (carries 1 mech or salvage)
- Original fusion engine (1-munition ascent advanced interplanetary)
- Mothership: berths hold fighters; doors have launch/reclaim rails

QUIRKS



SPEED

PROFILE

MUNITIONS

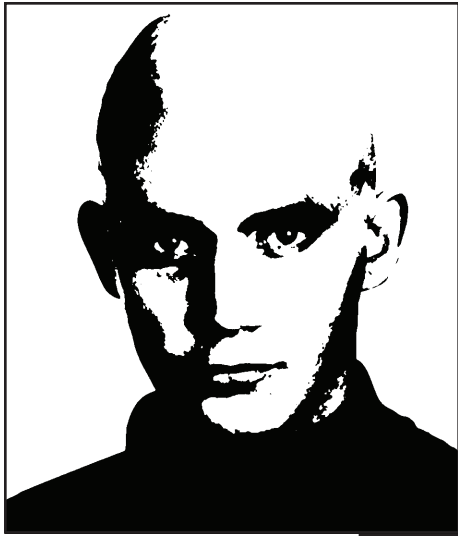
DAMAGE

external | critical hits | disabled

 | |

CRITICAL DAMAGE

- Armament disabled (choose)
- Nacelle, +1 munition to lift off
- Mecha bay doors jammed
- Deck pressure loss (+1 downtime SNAFU ongoing)
- Auxiliary power kicks in, -1 speed
- External optics short out (blind)



BATTLE

TACTICS

HARDWARE

COMMAND

HARM

strain / out / dead

 | |

EXPERIENCE

Mark experience when you miss, or when a rule tells you to.

ADVANCEMENTS

- +1 to a stat (max +3)
- Add a playbook special
- Take a special from another playbook
- Retire and get out of the game

HISTORY

PRODIGY

Choose a name/lineage/background/look:

Name: Selene / Marsen / N'dela / Ajani / Per-
ahta / Hanke / Anouk / Liis-Albano / France /
Aaron / Leo / Eliška

Lineage: Concordat / Dendrite / Factori /
Earth / Roosts / Holdborn / Cysts

Background: promoted exo / base brat /
tank rat / prestige academy / sim-baby

Look: stained / vat-fresh / androgynous /
reconstructed / fatale / beefy / inked

STATS

Assign +2, +2, -1, -1 to your stats, randomly.
Wait until you use them.

SPECIAL

Choose two:

- Tendency to stare:** When you inspect
an unfamiliar mecha, system, or
installation in detail, mark xp.
- It would take too long to explain:** When
squaddies carry out your weird or
upsetting plans, they mark xp and you
hold 1 weird.
- The long con:** When you first infect a
computer under the enemy's control,
hold 3 weird.
- In their hearts, they doubt:** Spend 2
weird to burn 1 SNAFU.
- It's part of a larger pattern:** Spend 2
weird to adjust a mission roll by 1 in
either direction.
- It's not your time:** When you impose
your will on an apparently *dead*
squaddie and spend 1-weird, they
recover 3 harm.
- Prescient instincts:** You may *boot it* with
+Tactics instead of +Speed.

ANGEL

Sold into the Dendrite after the CBE to help
resist Concordat attacks until Kilo Cyst went
silent in 27C. Elegantly simple in its design,
the Angel is expensive to operate because of
its reliance on advanced materials manufac-
turing.

Speed +2, Profile +1. Choose one option:

ARMAMENT

- Prismatic 8GJ UV Laser (4d far/ex quiet
advanced)
- Shear field projector (3d tight messy
advanced)

ARMOR

- Monofilament fractal carapace (2-armor)
- EM shield (-AOF munition advanced)
- Ghost ECM (+1 profile advanced)

AUXILIARY

- Tech level VI (expensive)
- Immune system: won't accept grafted
subsystems
- Orbital descent shield (munition)
- Trans-orbital lift thrusters (munition)
- Computer intrusion package (munition
advanced)
- It turns into a goddamn plane

QUIRKS



SPEED

PROFILE

MUNITIONS

DAMAGE

external | critical hits | disabled

 | |

CRITICAL DAMAGE

- Armament destroyed (choose)
- Auxiliary system destroyed (choose)
- Auxiliary power kicks in (-1 speed)
- Auto-escape system engages (mech
automatically flees weapons fire)
- Reactor jostled (-1 profile)

WEILER

A Roost Primary Systems mech, legendary for its maintainability and durability. Weilers were never produced in export numbers, and no pre-burst fabs remain, so they are treasured whenever they are uncovered.

Speed +1, Profile +1. Choose two options.

ARMAMENT

- Splitfire **24mm RAC** (3d near/far repeater)
- Raven 2GJ **chemical laser** (2d far/ex tandem)
- 5GJ **charged particle arc** (4d near messy repeater indirect)

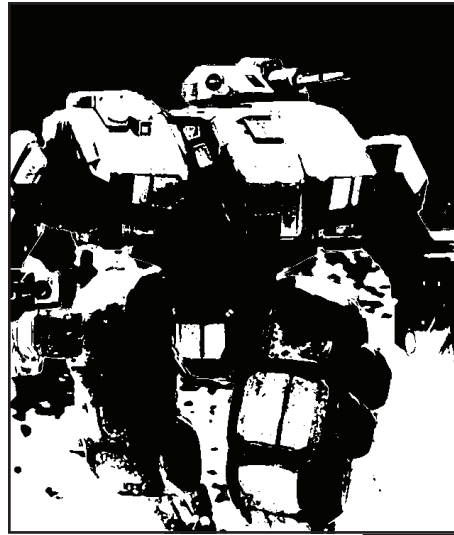
ARMOR

- Replacement granulated composites (1-armor)
- Original T3-series lattice (2-armor)

AUXILIARY

- RAC **cluster rounds** (-1d +AOF)
- Aerial target acquisition** package (all weapons gain AA)
- Anti-acquisition weave** (+1 Profile)
- Auto-med** (-1 harm, munition, advanced)
- Gelfoam extrusion system** (-1 external damage, munition)
- Anti-acquisition flares** (1-cover, munition)

QUIRKS



SPEED

PROFILE

MUNITIONS

--	--	--	--	--	--	--

DAMAGE

external | critical hits | disabled

--	--	--	--	--	--	--	--

CRITICAL DAMAGE

- Armament destroyed (choose)
- Auxiliary system destroyed (choose)
- Auxiliary power kicks in (-1 speed)
- Cockpit fire (harmful, ongoing)
- Cockpit spidered, +1 harm, -1 forward
- Knee servo (*push hardware* on rough terrain, -1 speed)
- Power plant casing crack spews black smoke (-1 profile, -1 speed)

EXO

Military exo vary from simple strength/endurance-boost frames to fully enclosed stealth nano-mechs. The G-99 is a typical TL IV model.

Speed +0, Profile +2. Choose two options.

ARMAMENT

- 12mm **snub HMG** (1d near repeat)
- Anti-Armor Rocket** (2d near munition)
- TL V **A-A Rocket** (2d near/far munition advanced)
- Limpet mine** (3d tight slow munition)

ARMOR

- Ceram Micro (0-armor)
- 'Bubblehead' **combat hood** (1-armor)

AUXILIARY

- Infantry exoskeleton**: repairs/upgrades -1 cost. Stow four in a mecha berth.
- Nanomech**: Exo get two upgrades instead of one.
- Hydraulic hands**: (2d tight) When you do **critical damage**, make a salvage roll at -2. Take -1 ongoing while you carry it.
- Orbit-to-HALO package (munition)
- 'Ostrich' leg extensions (Speed +1)
- Jump system (munition)
- Smoke cannister (munition)
- Computer intrusion package (munition advanced)
- 'Black pill' isotope reactor (+2 munitions)
- Auto-cauterizer (amputations cause only 1-harm)
- Anti-acquisition weave (+1 Profile)

QUIRKS



SPEED

PROFILE

MUNITIONS

--	--	--	--	--

DAMAGE

external | critical hits | disabled

--	--	--	--	--

CRITICAL DAMAGE

- Limb servo (harmful)
- Running hot (-1 Profile)
- Momentary power loss, hit the deck.
- Leg amputation (2-harm)
- Arm amputation (2-harm)
- Head hit (4-harm)

REGENT

The venerable Regent is one of the earliest aerodynamic re-entry/trans-orbital lifters still used in large numbers.

Speed +1, Profile +1. Choose two options.

ARMAMENT

- 'Thumper' **50mm AC** (3d near/far slow)
- Tail-mounted dual **18mm RAC** (2d near/far repeat AA)
- Octopus omnidirectional **AG missile system** (3d far salvo/4)

ARMOR

- Re-entry shielding (1-armor)
- Assault panels (2-armor)

AUXILIARY

- Ground-to-orbit **thrusters** (munition, glide re-entry)
- Large VTOL** (*expensive*, holds 1-supply)
- Ventral bay** (ramp, holds 1 mech or ex-loaded Iguana)
- Roundbelly** variant (holds additional mech/vehicle)
- Rapid drop-off mode** ("bounce 'n' fly")
- Field re-supply arm**: Convert 1-supply into 6-munitions.
- Mech recovery drone sled** (remote operated)
- Front-line retrofit** (remove *expensive*)

QUIRKS



SPEED

PROFILE

MUNITIONS

DAMAGE

external | critical hits | disabled

 | |

CRITICAL DAMAGE

- VTOL thrusters; requires runway to land.
- Nacelle damage - 2-munition to reach orbit
- Thrust vectors damaged (-1 Speed)
- Airframe damage, powered re-entry required (1-munition)
- Sensor array. -1 ongoing to assess
- Bay doors jammed
- Compartment seals blown - not vacuum safe

SYLPH

The Sylph is the third generation descendant of the Helical Systems *Aircat* ground support VTOL chassis. Released into the public domain after the Puissance conflict in 24C, the airframe was modularized to quickly adapt between air-to-air and air-to-ground roles.

Speed +2, Profile +1. Choose two options.

ARMAMENT

- Quad **18mm RAC** (3d near/far repeat munition)
- 3GJ **HEAP Bomb** (4d near messy 2-munition)
- AG missile** (3d extreme munition)
- HeSys Harpoon II-class **AA missile** (3d extreme AA munition)

ARMOR

- 8mm Gelcote (0-armor)
- Asymmetric printed foam (1-armor)

AUXILIARY

- VTOL Fighter, *flying*
- Afterburner** (+1 Speed, munition)
- Bomber** configuration (+2 munitions, -1 Speed)
- Orbital **re-entry shielding** (munition)
- Low observability** package (+1 Profile advanced)
- High-altitude **reconnaissance optics**

QUIRKS



SPEED

PROFILE

MUNITIONS

DAMAGE

external | critical hits | disabled

 | |

CRITICAL DAMAGE

- VTOL thrusters; requires runway to land; must taxi into dropships
- Thrust vectors damaged (-1 Speed)
- Sensor array. -1 ongoing to assess
- Flaps damaged; tight maneuvers require pushing your hardware
- Hardpoints - rightmost 2 munitions unusable.
- Compartment seals blown - not vacuum safe

THE MERCENARY COMPANY

COMPANY STATS

The company starts out with 1-cash, 1-supply, and 0-salvage.

REPUTATION

CASH

SUPPLY

SALVAGE

Your stash of supply and salvage is stored at your operating base.

Your block chain cash can't be stolen.

COMMANDER

If a player has taken the Commander play-book, this is them, otherwise an NPC.

ORIGIN

Pick one advantage. Actually I don't like this much, I think this ought to do some of the lifting for what type of company it actually is.

- Military traditions:** nice tight chain of command, bonuses to giving orders
- For-profit business:** careful control of spending increases mission pay by 1-cash
- Freedom fighters:** description
- Hoodlums:** description

ADVANCEMENT

The company itself advances the first time each of these things happen:

- Kill an enemy mech Veteran.
- Kill an enemy Commander (any sort).
- Destroy a mech company's base.

- Disable an enemy dropship
- Change your theatre deployment
- Complete a branching campaign end mission.
- A player character is killed or retires
- Pull off a mission with broad political significance.
- Completely resolve someone's *history* with another mercenary company
- Buy a dropship.
- Buy a jumpship.

ADVANCEMENTS

Auxiliary options (of course) increase the company's payroll, but it's assumed the company's fees are increased correspondingly.

REPUTATION

- Increase reputation:** +1 (max +3)
- Increase reputation:** +1 (max +3)
- Increase reputation:** +1 (max +3)

SPECIALISTS

- Security detachment:** armed security who will guard your operating base
- Off-world depot:** will guard your stash
- Maintenance team:** generates an extra critical repair opportunity
- Medical team:** surgeon and two assistants, restores 2-harm to everyone after each mission
- Logistics team:** they secure you an extra 1-supply after each mission
- Contract lawyer:** Before each mission, roll +Rep. On a hit, for this mission you get the benefit of one contract term perk you don't currently have.

OPERATING BASE

- Prefab HQ:** a collapsible briefing and situation room, you can set up at your

forward operating base. +1 forward to a pre-mission regional assessment, if you're able to make one

- Prefab Barracks:** a collapsible barracks and R&R room. Restores 1-harm to everyone after each mission.
- Medical pod:** a collapsible TL VI medical facility. If staffed by a medical team, this gives you a custom move: roll +nothing, on a hit you restore 1-harm to a character thought dead on the previous mission
- Medical pod:** a collapsible TL VI medical facility. If staffed by a medical team, this gives you a custom move: roll +nothing, on a hit you restore 1-harm to a character thought dead on the previous mission

AUXILIARY UNITS

These are NPCs who have joined the mercenary company much like the player characters have.

Each should be assigned a random NPC personality that affects them in play.

Any vehicles they bring with them are owned by them; they benefit from the deployment-provided repairs but any extra comes out of the company's options.

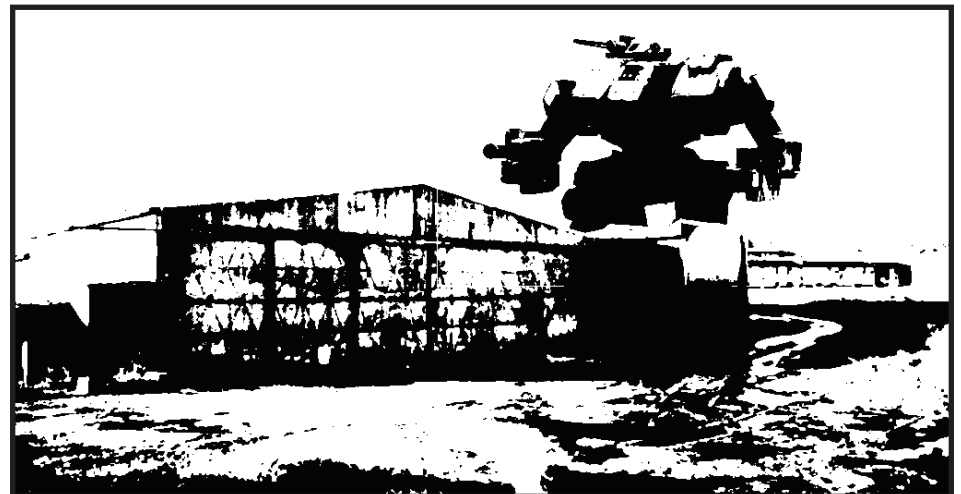
If the company provides them replacement or upgraded vehicles, those belong to the company.

- Flight crew:** a space-rated flight crew to fly one of your dropships
- Tank crew:** an auxiliary tank platoon signs on; they bring 3 medium tanks or 2 heavy tanks
- Air support:** an auxiliary air unit signs on with two Sylphs.
- Exo team:** a unit of six exo, or four exo and an Iguana
- Combat resupply team:** a flight crew plus Buffalo VTOL, can ferry supply and salvage to and from your operating base

CONTRACT TERMS

Enhancements to your terms of employment.

- Plum operating base:** while deployed, you are given a premium operating base which is protected, isolated, or hidden
- Intel hookup:** -1 SNAFU
- Prime salvage rights:** You get to keep any off-world mercenary tech you haul back to your operating base.



FIELD OPERATIONS—1

ENGAGEMENT

When you **enter the battlefield** or **engage with the enemy**, roll +Tactics. On a 10+, choose two. On a 7-9, choose one:

- You seize the **initiative**. You act while the enemy must react.
- You maintain unit **cohesion**. Your forces are positioned where you want them and are ready for immediate action.
- You gain a **tactical advantage**; establish a superior position, find cover/concealment, identify key enemy targets, etc. as established.

COMBAT RULES

WEAPONS FIRE

When you **give or take weapons fire**, roll the chosen weapon's dice on the fire table. D=Damage, C=Critical Hit.

AOF	1	2	3	4	5	6
Incidental	-	-	-	-	D	D
Direct	-	-	-	D	D	D
Concentrated	-	-	D	D	D	C
Precision	-	D	D	D	C	C

WEAPON FIRE MODIFIERS

Accuracy of Fire (AOF) increases by one when targets are exposed, unsuspecting, immobile, or outnumbered.

Range (too close, too far) reduces weapon dice by 1d/step. At 1d, reduce AOF instead.

Concealment or *Flying* reduces AOF by one. Below *Incidental*, reduce 1d instead.

Cover reduces dice by 1d (berms, ditches, heavy forest) or 2d (freeway supports).

RANGE	DISTANCE
Tight	0-50m
Near	50-300m
Far	300-1000m
Extreme	200-2000m

ASSAULT

When you **assault the enemy** to seize territory or gain a tactical advantage, spend 1-munition and exchange weapons fire. Roll +Battle. On a hit, you take the objective. On a 10+, GM decides if they are exposed, lose cohesion, or surrender.

SUPPRESSION FIRE

When you rake the enemy's position with weapons fire, spend 1-munition and roll +battle. On a hit, you give friendly troops an opportunity. Inflict damage at reduced AOF. GM chooses: the enemy is rattled, or they take cover and cede the initiative. On a 10+, you also give the allies you cover +1 to their next rolls.

TAKE COVER

When you **take cover from incoming fire** roll +Profile. On a hit, you scramble to establish *cover* or *concealment*, and you lose *initiative*.

PUSH IT

When you **push your hardware beyond its limits**, take 2d incidental and roll +hardware. Manifest a *quirk*. On a hit, it works out okay. On a 10+, either avoid damage or gain advantage from your risky move.

Using this rule for overloading a system, driving off cliffs, falls, rough terrain, shoving through ruins, collisions, hanging on to enemy mecha.

SUPPORT RULES

ASSESS

When you **assess the situation**, ask a question and roll +Tactics. On a hit, you get good information; on a 10+ you also get details or the big picture. On a miss, you get only impressions, waste time, or expose yourself to danger.

BOOT IT

When you haul ass to **get there first, in time to help**, or to **get the hell out of there**, roll

+Speed and take enemy fire as established. On a hit, you make it. On a 10+, reduce AOF or +1 on the next roll.

Over short distances, Speed is comparable across vehicles classes. Over longer distances, ground vehicles cannot outpace aircraft; aircraft cannot outpace space ships.

ON THE MOVE

When you **spend a long time on the move**, spend 1-munition.

INFILTRATE

When you use **move to a position** using *concealment*, roll +Profile. On a 7-9, choose one, on a 10+ choose 3: it doesn't take long / bring a squaddie with you / you notice something (ask the GM).

HELPING

When your unit has *cohesion*, anyone can join assaults or fire missions except as established. (The rest may *boot it*.)

RALLY

When you **rally the unit** before or during the action, roll +leadership. On a 10+ hold 3; on a 7-9 hold 1. Spend hold to give benefits to squaddies:

- The unit regains *cohesion* (now).
- I've got your six! +AOF to next shot
- Look out! -1d to incoming fire

IMPOSE YOUR WILL

When you **impose your will**, roll +leadership. On a hit, they do what you want or they take 1 strain. On a 10+, 2 strain.

(Strain is *harm* that doesn't tick *out* or *dead* boxes.)

RELYING ON ALLIES

When you **rely on NPC allies**, roll +rep. On a hit, they come through. On a 10+, with enthusiasm. On a miss, they're useless, MIA, or double-crossing you.

SPOT THEIR COLORS

When you **spot the insignia** of a mech company, say who you think it is and roll +Reputation. On a hit, you're right. On a 10+, the GM will tell you their angle.

SALVAGE

When you **strip a mech, installation, or ship for salvage**, roll +hardware and do 5 damage. On a hit, choose: it's *sweet* (worth 1-cash), it's *useful* (it's 1-supply) On a 10+, also choose: it's a functional upgrade (as established) / it only takes ten minutes.

DAMAGE

Apply 'D' damage to the damage track. 'C' damage is critical and skips the 'external' boxes. When you tick a critical hit box:

- The pilot takes 1 harm
- Choose a critical damage result

ARMOR

Armor absorbs incoming damage. Each point of armor eliminates one D or C result from the total damage sustained during an assault or from established weapons fire.

Example: A 2-armor Weiler assaults an enemy position and is fired upon by two heavy tanks (3d concentrated each). The first tank rolls 1,4,2 (1xD) and the second tank rolls 3,1,6 (1xD, 1xC). The Weiler's 2-armor absorbs the two 'D' hits, but the 'C' goes in.

SNAFU

When a mission begins, the company begins with SNAFU points based on the theatre.

SNAFU points can be paid down over the course of the mission, by spending them to worsen the odds of rolls:

For each point of SNAFU you burn, roll an additional die, and remove the highest roll from the results.

Any large-scale resolution is eligible: always **engagement, after action, and relying on allies**. Assess for long-term recon efforts.

FIELD OPERATIONS—2

Combat rule rolls are never eligible (however significant).

GM SNAFU

The GM can spend SNAFU at any time to reveal a truly terrible problem. (Like, *the dropship won't start* terrible.)

LEFTOVER SNAFU

If the mission ends with SNAFU remaining, remaining SNAFU is spent on the opportunity roll.

HAULING

Cash takes up no cargo space.

An empty mecha berth can hold 3-supply/salvage. Mecha (with arms) can carry 1-salvage; exo can only carry sweet salvage (it's smaller and more valuable).

DOWNTIME

When you return to base, take all the benefits of your deployment.

FREE ACTIONS

Use these actions freely during downtime.

STOCK UP

When you **buy and sell** at a properly *stocked* base, station, port, etc. swap points of *supply*, *sweet salvage* and *cash* can be traded 1-for-1.

RE-ARM

When you **reload company mecha**, burn 1-supply, top up munitions in all normal mecha, or a single *expensive* mecha.

REARMOR

When you **rearmor company mecha**, burn 1-supply, repair all damage boxes in 3 normal mecha, 6 exo, or a single *expensive* mecha.

CRITICAL REPAIR

When you **repair critical damage**, spend 1-supply and roll +hardware. On a miss, it becomes an unknown quirk (max 3 quirks). On a hit, it's repaired. On a 10+, you make do without the 1-supply.

Advanced systems take 2-supply instead.

When **critical damage is repaired**, cross out that critical damage option. You can't choose crossed-out options while there are other undamaged choices.

MEDICAL CARE

When you **get the best medical care** money can buy, spend 1-cash and restore 4-harm.

QUIRKS

Unknown quirks are problems lurking in a mech. When a quirk *manifests* as a specific problem, determine what it is by rolling:

2D6	QUIRK
2	Leaks superconducant. Mech becomes <i>expensive</i> .
3	Loses power whenever you miss a <i>push the hardware</i> roll.
4	Heat shielding cracked. +1 Profile.
5	Double-ejects ammunition. Permanently fill 1-munition.
6	Targeting computer glitch: shots at <i>extreme</i> always miss.
7	Asymmetric EM signature makes mech easily identifiable.
8	Climate control failure makes pilot grouchy. -1 to Assess.
9	Delicate. An <i>external</i> damage box becomes a <i>critical</i> damage box.
10	Nanosopic stress fractures. Permanently fill leftmost damage box.
11	Spews black smoke. Profile -1.
12	Feedback— <i>external</i> damage to the mech causes <i>harm</i> to the pilot.

OPPORTUNITIES

After each mission there's a random opportunity. You can burn SNAFU on this roll.

OVERHAUL

When you completely **overhaul a unit**, burn 1-supply, remove 1 quirk, and uncross one critical damage result so that it can be chosen again.

UPGRADE

Vehicle upgrades cost 2-cash. *Advanced upgrades* cost double. Upgrades to *expensive* vehicles cost double.

(e.g. Original fusion engines for your Troll cost 8-cash.)

Upgrades for exo come in kits that apply the same upgrade to up to 4 exo.

When upgrades are available, choose your preferred upgrade and roll:

2D6	UPGRADE
2-5	Not available. Choose again and re-roll.
6	Critically damaged. Half price!
7-9	Good as new.
10-12	Knockoff costs 1-cash less.

BUYING MECHA

When you **have the chance to buy a mech/vehicle**, say what model you're looking for and roll +Reputation.

ROLL	RESULT
2-4	Wreck: It's a model you want, but it's <i>disabled</i> , depleted and has d3 critical damage. Half price!
5-8	Wrong model, with d2 unknown quirks.
9-11	Desired model, 1 unknown quirk, randomly chosen options.
12+	Sweet find: the model you want, with the options you want.

SELLING MECHA

When you try to **find a buyer for a vehicle**, roll +Reputation, -1 if there are quirks or damage, -1 if there's critical damage.

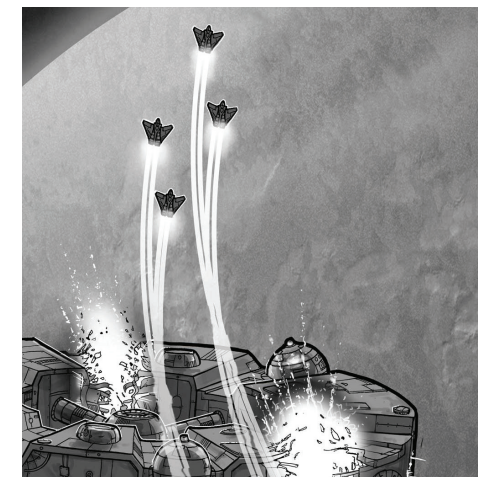
On a miss, a shit offer comes in at 1/4 market price. On a hit, choose: 1/2 price right now, or full price after next mission. On 10+, full price now.

NEW CONTRACT

Jump the system (1-cash) and choose a new theatre of war for your next deployment. Burn 1-SNAFU if you have any.

COSTS

EXPENSE	CASH
Hired Regent for 1 mission	1
Hired Troll for 1 mission	2
Interplanetary trip	1
Inter-system jump	1
1-supply	1
Medical care	1
Exo	3
Mecha/Vehicle/Ship	12
<i>Expensive</i> Mecha/Vehicle/Ship	24
Jump Ship	80



TURN ORDER

2GTB2 doesn't have an "I go, you go" turn sequence, even in combat. PC vs. NPC action is often simultaneous.

A common pattern is to tell the PCs what they perceive—tip them off to what the enemies are doing (or starting to do) or what's happening in the environment—then ask them how they react.

They'll make a choice, which will determine what (if any) resolution rules apply as the action is resolved.

GM: The Weiler opens fire with its rotary autocannon, exploding the brickwork next to you. What do you do?

The PC might react by scrambling for cover, hold their ground and returning fire, or ignoring the incoming fire entirely to do something desperately urgent. Each of these could trigger different resolution rules.

Coordinated, simultaneous action is not a given.

With initiative and cohesion, a PC assault might involve everyone contributing weapons fire.

When they've lost cohesion, they act alone (unless they're commanding a group). Worse, their actions are still sequential. Your lead-ins might imply bad things happening to other PCs.

GM: Xu, as you crest the hill you see a spray of missiles arcing down towards Sheil. What do you do?

GM MOVES

As GM, you're describing what the characters see and experience. But behind the scenes you're making choices about *what* to describe, what their challenges are, and what's going to happen next.

Use these GM "moves" as inspiration.

- **Tell them what's happening and ask them what they do.**

ON THE MOVE

- show them the big picture
- declare a big sweep of time goes by
- Set scenes presumptively
- Drop them into the action

PERCEPTION MOVES

- When they're in control, **talk to them as if they are their mechs.** They see and move as gracefully as with their own bodies.
- When they're hurting, **talk to them about their fragile bodies, the smoke in the cockpit, and the unresponsive controls.**
- **Paint the scenery a bit at a time.** There's no need to describe everything at once.
- When a lot is happening at once, only **tell them the most prominent stuff**, the rest is impressions.

BATTLEFIELD MOVES

- When they lose initiative, roll over them with enemy plans.
- When they lose cohesion, make coordination cost precious time.
- When they lose situational awareness, make them act on what little they know, or spend precious time learning more.

ENEMY MOVES

- act with the initiative
- seize a tactical advantage
- rally somewhere
- Inflict fire
- pin them and flank them
- retreat through rearguard defenders
- tempt them with apparent weakness or confusion
- ambush them

FOG OF WAR MOVES

- ambiguous evidence
- remind them what they don't know

WAR IS HELL MOVES

- Allies aren't where they are expected
- Allies not doing what they're supposed to
- Conflicting orders
- Drag them into logistical bullshit
- Not enough time, not enough stuff

DOWNTIME MOVES

- Give them news of the war
- That's some bullshit right there

NPC UNITS

When you introduce NPC units into the game, roll to determine a trait. Use this for individuals, old enemies, auxiliary units and NPC commanders.

Roll a Fortune and a Trouble. If the Trouble contradicts the Fortune, only the Trouble applies.

NPC GROUP TRAITS

1D6	FORTUNE	TROUBLE
1	Elites	Green
2	Favored	Hunted
3	Locals	Reckless
4	Reliable	Savages
5	Veterans	Total Fuck-Ups
6	Well Supplied	Vengeful

MERC COMPANY TRAITS

1D6	FORTUNE
1	Bushwhackers
2	Heavies
3	Nightstalkers
4	Sharpshooters
5	Swarm
6	Treadheads

Bushwhackers spring ambushes and fade into concealment.

Elites are skilled and tested. They've been in this situation before, and they know exactly what to do. +1d to weapons fire.

Favored units have friends in high places; they can pull strings and expect heroic measures when they're in trouble.

Green units start out keen (+AOF), but soon get pinned, retreat, or rout.

Heavies tend to have lots of big mechs like Hellhounds and Maulers.

Hunted units have made an enemy, whether they know it or not. Maybe someone on the other side, maybe not.

Locals know the short cuts, the pot holes, and the hiding spots.

Nightstalkers treat night-time like day, and seem unperturbed by smoke and obscurity.

Reckless units don't retreat or take cover when they should. +1d when they assault.

Reliable units are there when you need them. +2 to command, rally, etc.

Savages cause chaos, focus on the weak, and waste time looting.

Sharpshooters eat live-fire drills for breakfast, +AOF.

Swarm companies are 50% larger than usual, with extensive reliance on swift, light mechs and vehicles. When they maneuver, they take up many positions.

Total Fuck-Ups can't do anything right. +1 SNAFU if they're on your side, -1 if your enemies are stuck with them.

Treadhead mercenary companies rely on vehicles extensively, especially tanks.

Vengeful units waste time and take risks to punish enemies that have pissed them off.

Veterans don't fall for your bullshit, and aren't easily forced into acting unwisely. They're survivors, and will disobey orders rather than do something dumb.

Well Supplied units have the best gear. Their mechs (if any) have an additional upgrade or two.

FORCE REFERENCE

262BT VO.10-16/21

UNIT	TYPE	TL	SP	PR	ARMAMENT	DMG
Regulars	Infantry Squad	III	-1	+0	RPG (2d near slow), mortars (1d far slow ind area)	1/3AP
Special Forces	Infantry Squad	III	-1	+2	RPG (2d near slow)	1/1-armor
Chameleons	Infantry Squad	IV	-1	+3	RPG (2d near slow)	1/1-armor
Grummon	Supply Truck	III	+1	+0	7.5mm MG (3d AP near/far rpt), 2x Infantry Squad or 6x Exo	2
Spock APC	Armored Transport	III	+1	+0	21mm AC (2d near/far repeater), 1x Infantry Squad or 3x Exo	3/1-armor
York 6A	Light Tank	III	+2	+1	85mm AC (2d near/far slow)	3/1-armor
Canard	Medium Tank	III	+1	+0	105mm AC (2d near/far slow)	4/1-armor
Aberdeen	Battle Tank	III	+1	+0	120mm AC (3d near/far slow)	5/1-armor
Hydra	Mobile AA	III	+1	+2	SKP missile launcher (4d extreme AA munition fast)	3/1-armor
Harrow	Mobile Artillery	III	+0	+1	120mm artillery (3d extreme indirect area)	2/1-armor
Banshee	Infantry VTOL	III	+2	+1	13mm RAC (2d near/far rpt), 1x Infantry squad or 6x Exo	4
Buffalo	Armor VTOL	III	+0	+0	Quad 12mm RAC (3d near/far rpt), 2x tanks/mechs	5
TA-5	Exoskeleton	III	-1	+1	13mm AC (1d near rpt)	2
G-99	Exoskeleton	IV	+0	+2	13mm AC (1d near/far rpt)	2
Ambler	Scout Mech	III	+2	+0	20mm AC (2d near/far)	4/1-armor
Raider	Scout Mech	IV	+2	+1	21mm AC (2d near/far repeater), jump system	4/1-armor
Emmett-C	Strike Mech	III	+1	+1	Dual 105mm (4d near slow)	5
Hound	Strike Mech	IV	+2	+0	Dual Laser (2d near/ex free adv)	4
Viking	Heavy Strike Mech	III	+0	-1	Dual 105mm (4d near slow), jump system	5/1-armor
Siren	Heavy Strike Mech	IV	+0	-1	Quad laser (4d far/ex AA-capable)	6/1-armor
Weiler	Heavy Strike Mech	IV	+1	+1	24mm RAC (3d near/far repeat), laser (3d far/ex tandem)	6/1-armor
Willow	Artillery Mech	III	+1	+0	Dual RP (3d far obv ind salvo/3)	5
Assassin	Artillery Mech	IV	+1	+2	Trident 80mm Artillery (5d ex obv ind area salvo/2)	5/1-armor

CONVENTIONAL

Motorized infantry platoon: 3x Regulars, 3x Spock APCs

Airborne infantry: 3x Special Forces, 3x Banshee VTOLs

Tank platoon: 2x York 6A, 2x Canard

Heavy tank platoon: 3x Aberdeen

HQ tank platoon: 2x Aberdeen

Artillery platoon: 3x Harrow, 1x Hydra AA

Mobile Exo platoon: 2x Spock APC, 4x TA-5 Exo

Advanced Exo platoon: 1x Iguana, 4x G-99 Exo

MECHA

TL III SQUADS

Recon: 2x Ambler, 1x Emmet-C

Assault: 2x Viking, 2x Emmett-C

Heavy assault: 3x Viking, 1x Willow

Support: 3x Willow, 1x Ambler

TL IV SQUADS

Recon: 2x Raider, 1x Hound

Assault: 2x Weiler, 2x Hound

Heavy assault: 2x Siren, 2x Weiler

Support: 2x Assassin, 1x Siren

LARGER FORCES

Base garrison: 8x Infantry, 4x Canard, 2x Aberdeen

Urban occupation infantry company: 4x motorized infantry platoons (total 12x Spock APCs, 12x Regulars)

Front-line tank company: 2x tank platoon, 3x heavy tank platoon, 1x HQ tank platoon

Planetary offensive detachment: 3x heavy tank platoon, 1x TL III assault mecha platoon

Off-world mercenary company (TL IV): 1x Assault squad, 1x support squad, 1x recon squad, 1x Advanced exo platoon

WEAPON TAGS

AA anti-aircraft weapons only engage *flying* target, but with no AOF penalty

advanced systems require an extra 2-supply to repair from critical damage

area/n attacks affect up to *n* targets *near* their primary target

expensive vehicles must be resupplied and repaired separately from others

free weapons never require munition spends

indirect weapons fire over or around intervening obstacles (potentially bypassing cover) at -AOF

interplanetary vehicles

messy weapons cause substantial collateral damage

munition spend 1-munition to use (in addition to any spend required by rules)

one-shot weapons can only be used once

quick weapons go first, if there's doubt

quiet weapons don't give away the firer

repeater spend 1-munition for +1d damage, or to hit multiple targets at -1 AOF

tandem weapons can be freely used alongside other weapons

salvo/n like *repeater*, but spend up to *n* extra dice for +1d each

slow weapons go last, if there's any doubt

DETACHMENTS

Infantry: Squad (5-10 soldiers), Platoon (3-5 squads), Company (4-6 platoons)

Armor: Platoon (3-5 vehicles), Company (4-6 platoons, ~20 vehicles)

Mechs: Squad (4-6 mechs), Company (3 squads)

Aircraft: Flight (3-5 aircraft), Squadron (4 flights), Wing (3 squadrons)

It's 28C, 2800 years after humanity began spreading out into the galaxy. Jump ships spread out from Earth along veins of hyperspatial equivalence. There, they found an endless network of resource rich star systems dotted by marginally habitable worlds.

THE CBE

In 25C, a cataclysmic gamma burst event (CBE) from the galactic core began snuffing out worlds, blasting off atmospheres and shifting or breaking hyperspace veins.

THE SELENBERG DENDRITE

A long, branching filament of hyperspace veins connecting a hundred systems. It was the first major vein to be colonized, and the first to be struck by the CBE.

Due to its lie along the galactic arm, the Dendrite systems were affected at the same time, leaving no time for preparation or evacuation.

Many

The cataclysm interrupted Earth's influence, and fractured the survivors of the Dendrite into a hundred tiny nations competing for resources.

Today, affiliation with 'the Dendrite' is a statement of human unity (though the means of achieving unity differ radically throughout the Dendrite).

THE CONCORDAT

With a century to prepare, the worlds rimward of the dendrite began a massive ship-building effort in an attempt to move as much of their population as possible onto to jump-capable ships.

The survivors of this project jumped through the CBE wave to find themselves the unchallenged masters in a crippled galaxy.

The Concordat was founded from this opportunity. It is comparatively small in population, but maintains its supremacy by violently opposing tech level VI development and the production of TL V weaponry anywhere within the Dendrite.



Concordat jump ships can travel along higher-order hyperspatial potentials, letting them make jumps that other ships cannot. As such, Concordat controlled space is a long, diffuse network superimposed on the rest of human space.

Characters from Concordat are usually exiles or defectors. (Facism doesn't work out for everyone.)

FACTORI

The first robotic Factori ships were observed in 28C, far behind the wave.

Its origin is disputed, but the popular theory is it began as an automated pre-colonial support system at the far end of the Dendrite. Damaged by the CBE, it began self-replicating.

The Factori control minds seem uninterested in technological development, so they can only jump along the most stable veins.

Factori spreads slowly, starting bizarre terraforming, resource extraction, and automated factory production wherever it goes.

Factori project ships occasionally produces ghost habitats, seemingly ready for humans to move into, although these are generally in inconvenient or uninhabitable spots.

Factori IFF can be spoofed, with care, which has allowed a few human communities (some

quite large) to co-exist within Factori projects. Characters of Factori lineage are from these communities.

They live alongside the robots, peacefully or parasitically, as Factori operations are vulnerable to determined 'poachers'.

Factori weapons development is primitive, but their 'immune responses' are destructive, overwhelming, and poorly aimed. Purposeful or collateral damage to Factori operations is treated severely.

Factori minds suck at conversation, but they do understand resource needs and trade,

Many have been known to sell resources for human cash, which they use to buy advanced tech supplies for mind maintenance or specialized projects. A few Factori centers have been transformed by visiting humans into pleasant trade hubs.

Travel by Factori jump ship is a common way to get around (and for dropships with spoofed IFF, very cheap).

HOLDBORN

Babies are born in space every day, but the holdborn consider space their home. A majority of the Rimward wave-jump ships didn't join the Concordat. Many of their inhabitants settled on Dendrite worlds as they became habitable again, but the ships still remain.

They're non-militarized, and they maintain a frosty understanding with the Concordat.

CYSTS

Very high TL worlds, usually in systems unreachable by crappier jump systems. Powerful interferometers (or post cards) show the the rings they're building, but they're deeply isolated, with the exception if Kilo Cyst which stood in philosophical opposition to the Concordat, and sold high-tech arms into the Dendrite for a few centuries before going quiet.

Cyst families sometimes return to the Dendrite for philanthropic, ethical, religious or other reasons.

EARTH

Mostly ice-covered now; still a huge population center, but deep under the glaciers. Insular, in many ways a prototypical cyst.

THEATRE: DARNAN FRONT-1

262BT VO.10-18/21

The blast side of Caplan IV is a million square clicks of sun-drenched desert, and the location of one of the Dendrite's most drawn-out wars.

The Republic of Darna and the polar Fiedan Conjugate have been fighting for forty years to control the resource rich territories (bed-rock radioactives) and a network of hundreds of pre-blast facilities.

The Republic military is funded by five refining guilds. The guilds compete ruthlessly, and their mistrust and lack of cooperation extends into strategic and tactical planning.

As the Republic military planning committees are composed entirely of guild personnel, missions are regularly compromised by guild interference:

- Missions may be loaded down with guild-specific side objectives.
- Missions may have been deliberately planned to interfere with other friendly operations.
- Missions may have been designed to harm the reputation of a planning committee leader, rather than to achieve a military objective.
- Supply lines and logistical support are erratic at best.
- Officers are regularly replaced, so missions are planned by inexperienced personnel.

The Republic's active propaganda operation blames the constant screw-ups and on Fiedan operatives, the troops themselves, or the excesses of off-world mercenaries.

The atmosphere on deployment bases tends to be bureaucratic, bloody-minded and suspicious. Occasionally, fights break out between units aligned with different guilds.

Companies taking contracts with the Darnan Republic are advised to be careful.

The good news is that they'll take just about anybody.

EMPLOYMENT

Reputation: Any

Mission Pay: 2-cash

Mission SNAFU: +4d Direct

Resupply: 3-supply/mission, stocked

Repair: 2-damage/mech, 2x critical repairs

Medical: 2-harm/mission, medical treatment 1-cash

Salvage: +1 cash for TL V+ salvage

Buy/Sell: -1 to mecha sales, reputation irrelevant

206	MISSION TYPE
2	Garrison duty
3	Ambush
4	Escort
5-6	Defense
7-8	Patrol
9-10	Raid
10-11	Assault
12	Offensive

206	ALLIES / OPPOSITION
2	Off-world merc mecha company*
3	Artillery platoon + light tank platoon
4	TL III assault mecha platoon
5	Counter-sabotage patrol: 2x APC, 8x TA-5 Exo
6	d2 Tank platoons
7	Fiedan TL III recon mecha squad (2x Ambler, 1x Emmett-C)
8	6x Grummon trucks, roll for escort
9	d3 Motorized infantry platoons (3x Spock APC, 3x Infantry each)
10	Roll twice*, ignore this entry
11	Air support (3 Sylphs)
12	Front-line tank company*

* +2 cash if this is known mission opposition



206	PLACES
2-4	Orbit denial battery (93a)
5	Rocktop rail launch facility
6	Convergence supply depot (SD 238)
7	Transport causeway "444"
8	Gzilt thorium refinery
9	Andorris Canyons
10	Balliac Lake Bed (dry)
11	Mesa Fields
12	Salt Crustfields

SNAFU EXAMPLES
A nearby allied mission has gone awry
Post-insertion new orders
The rust-bucket evac vehicle is down 8km away for maintenance.
Surprise! Your mission is actually a diversion to distract from the real mission. Double the opposition.
Magnetic grit storm: 3d Direct
Misidentification leads to friendly fire—air strike, artillery, or a 'welcome home' salvo.
Shortages: 1-supply resupply, no buying.
Intel was completely wrong, you're 30km from where you need to be

206	UNIT DISPOSITION
2	Total disarray: on fire, repairing
3	Mired in some logistical nightmare
4	Resupplying
5-6	On the move, weary
7	On the move, alert
8-9	Geared up, ready for action
11	Digging in, fortifying, alert
12	Fighting

206	OPPORTUNITY (-SNAFU)
2	Resentful regulars stage friendly fire, or a base-side ass-kicking.
3	Theft at base: lose d6 supply/cash.
4	The good techs arrive; overhaul up to 3 mechs.
5-6	Mech or Vehicle has come up for sale. Roll at -2 on the Mecha chart.
7-8	Cycled out for R&R. Everyone heals 2-harm. Roll another opportunity.
9-10	Dropship for sale (-1 to the buy roll)
11-12	Contract has expired. Renew for 3-cash/mission, or spend 1-cash to change theaters.

THEATRE: DARNAN FRONT-2

262BT VO.10-19/21

PLATEAU OFFENSIVE OF 28.04C

As an alternative to randomly generated missions, this is a campaign A linked series of missions, representing an offensive deep into Fiedan territory.

Players start with mission A or B, and can select connected missions after that.

A: EYES ON CITY 31

Fiedan special forces have dropped an ECM node into City 31, that's letting them orbit-drop exo into abandoned refinery city.

We're holding back their heavy reinforcements, but the force concentration is stopping us from advancing.

Get in, hit that ECM and get out. Move quickly, the place is thick with exo.

SNAFU: Actually, there's an Iguana as well.

SNAFU: "New orders: the main force is moving north, support the 82nd Banshee VTOL infantry in clearing the exo."

B: LAST TRAIN FROM RLF

Fiedan's 2nd division is actively pulling out of the Rocktop Rail Launch Facility; the rail has been firing constantly to evac as much thorium as they can.

We have forward eyes in the plaza, so we know the RLF is only guarded by a York light tank platoon. Inject fast, disrupt the launches until the main armor division can reinforce you.

SNAFU: The Yorks are actually waiting for a merc recon mecha squad to do a VIP extraction from the launch facility.

SNAFU: A full thorium hauler convoy arrives, with escorting Canard tanks and Grummon infantry squads. They intend to launch the thorium.

C: CRACKER JACK RUN

A retreating Fiedan light armor company has been held up by a grit storm. Before they get away

SNAFU: The grit storm picks up again, just as your dropship lands.

SNAFU: It's a trap. They are supported by a flight of Slyph ground support fighters.

SNAFU: It's actually the terrain that slowed them; they drove 300m onto a mineral crust over a brine slough and are now hung up. Depth varies from 1m-4m.

D: PARKING LOT BLUES

4th Wing has destroyed three companies of armor on the Sorona Flats. Finish off survivors and patrol the area until ground forces arrive.

SNAFU: It's a civilian convoy. It's horrible.

SNAFU: Off-world mecha mercs are salvaging. A squad plus salvage trucks and a Troll.

E: RUMBLE IN THE RED

A huge fleet of thorium extractors (8-dmg) operates here, protected by a Fiedan regulars TL III mech platoon. Keep them busy until a control team (Darna elite infantry in 2x Banshee VTOLs) can identify and control the fleet command vehicle.

SNAFU: VTOLs brought down by friendly fire (automated AA, stranded there last year). Rescue them, 5km east of fleet.

SNAFU: 5 extractors conceal rocket pod booby traps (4d near far salvo/2)

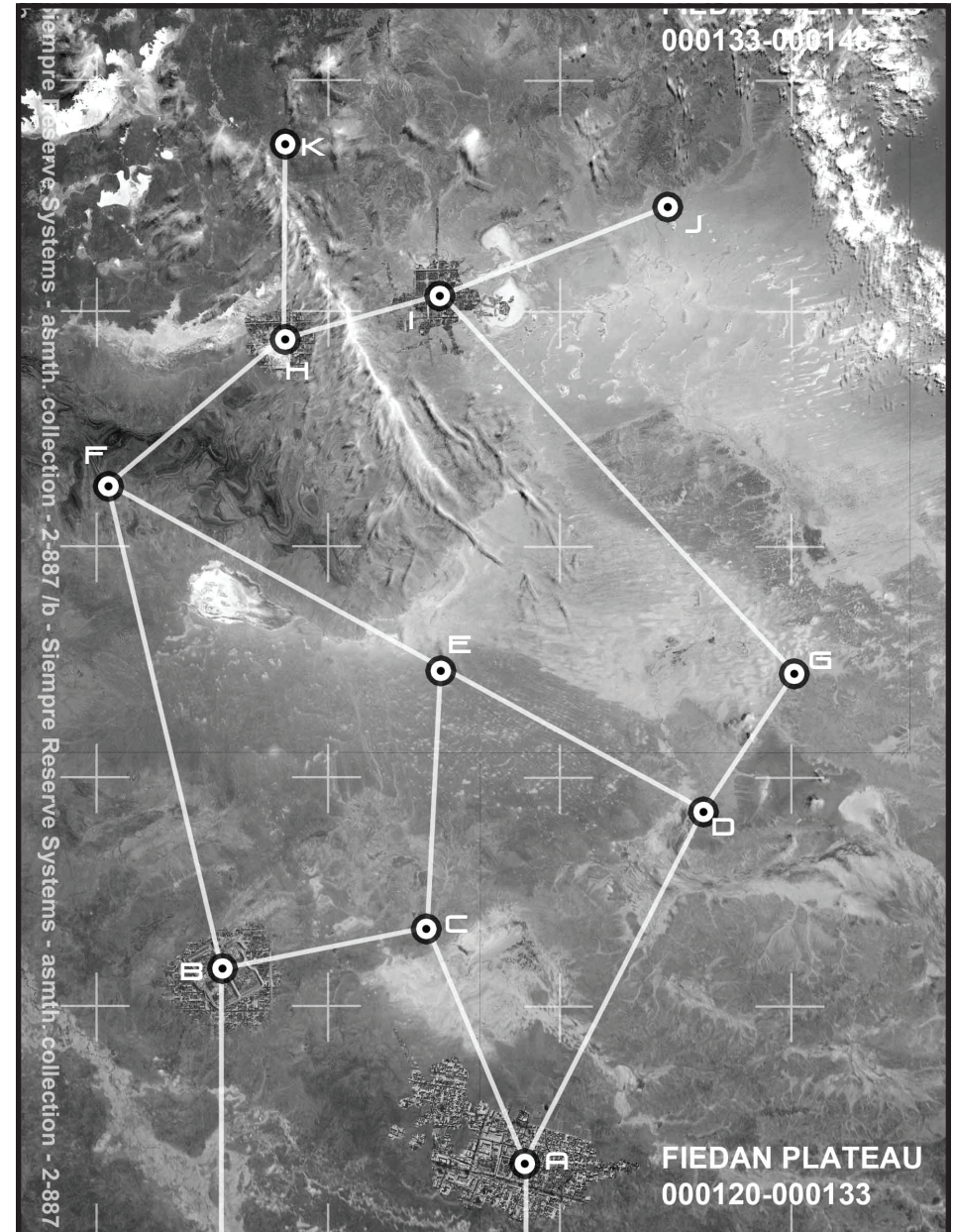
F: THE BIG WHITE LIGHT

The plateau's distributed lasing array (DLA) has fried all our orbital assets. We need it stopped, but intact: penetrate the control center built deep in the Chey Cliff mine and take control.

The mine is 2km long straight-ish tunnel into the plateau side. Expect suicidal resistance from a platoon of Emmetts and Vikings. Air insertion will get you fried, you'll need to walk in (-1 munition).

SNAFU: The mine lights are out. Headlights work to *tight* range, but make you *exposed*.

SNAFU: Fiedan has moved a bunch of lase nodes to fire down the mine shaft (2d blinding).



SNAFU: Stray comms reveals your mission is a diversion, and there's probably two platoons of mechs down here.

SNAFU: HQ thinks you're dead, and is starting to blast the DLA with long artillery. Better hurry, or your bonus will be gone.

THEATRE: DARNAN FRONT-3

262BT VO.10-20/21

G: FLYPAPER GULCH

A rapid blitz has managed to bring a company of Hydra AA in range of a Fiedan canyon VTOL forward air base. The Sylphs on the ground can't take off, but their light armor is threatening to push back the Hydras.

Get in there and fuck up that airfield before the Sylphs can launch.

SNAFU: Fiedan chameleons are standing up ECM pods to jam the Hydra's targeting systems. If this keeps up, we're gonna get strafed to pieces.

SNAFU: There's a Troll on the canyon floor with platoon of Aberdeen tanks.

H: TOP OF THE WORLD

Fiedan has stalled our massive armor push to reach Delta city on the upper plateau. Off-world mecha company with a load of Assassins has made the ascent impossible.

Drop in behind them with some other mercs we've hired [roll for which], and get that heat

off us before they're able to stop the assault entirely.

SNAFU: The LZ is extremely hot. 2x Sylph, 2x Raiders are waiting.

SNAFU: AA from Delta city takes out your companion dropship's lift engines at 500m, no survivors.

SNAFU: HQ calls off the armor push, you're high and dry.

I: BAD NEWS FIRST

Echo City is a dense network of industrial and logistics operations. We're going street by street to clear out Fiedan resistance. Take the south-east district and work your way to city center where you'll need up with 8th company for the final push into the north refinery district.

Expect resistance of any kind: infantry, heavy armor, Fiedan mechs, off-world mercenaries.

SNAFU: Skyscraper collapse pins several of your vehicles (2d direct).

SNAFU: Several of the street approaches to the center are mined (3d incidental messy).

SNAFU: Raiders are waiting on top of reinforced buildings.

SNAFU: 8th company makes way better time than you, but starts taking heavy artillery at city center.

J: FOUR TOWERS

Four towers is a pre-blast jump ship construction facility. Four struts, each a kilometer tall, once supported a continent-class colony ship meant to save a million lives.

At least two off-world mecha companies that are giving us a hard time are operating from here. Hit and run is the name of the game: disable their dropships to cut their operating range.

SNAFU: A squad of Raiders is on patrol with camdrones. Gonna make it hard to sneak up.

SNAFU: Your ride out of here has been spotted by two Angels.

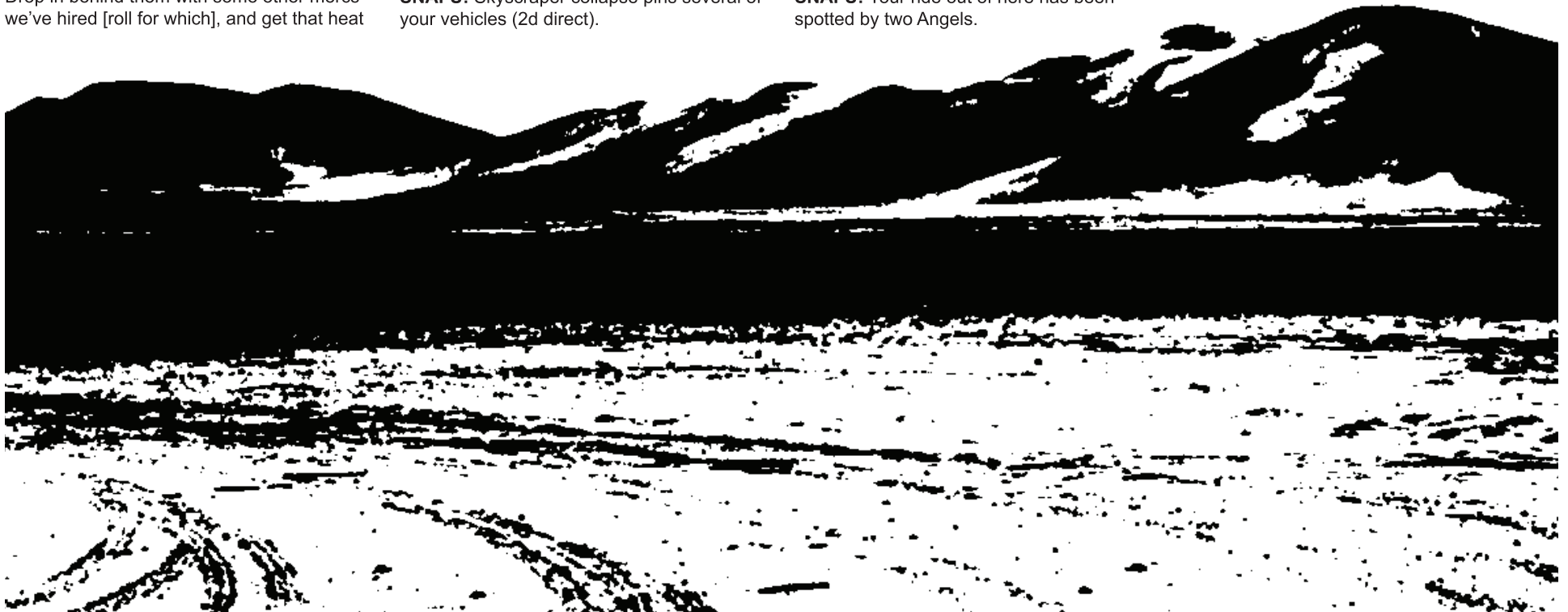
K: PAYDAY SURPRISE

Comms intercepts reveal that a contract dispute with [mech company] has resulted in Fiedan confiscating a Weiler and a Long Gun Hellhound. The mechs have been stashed in a refinery depot near Mesa 221. They're due to be shipped out today. If you're fast, that's some sweet salvage.

SNAFU: [Mech company] stole them back this morning and is ground sledding them out east toward their dropship now. Fiedan armor is pursuing.

SNAFU: Early morning pre-emptive assault: a flight of heavy VTOLs drops a squad of Fiedan TL III heavy mechs on your doorstep. Wake up, soldier!

After completing mission 'K', the company automatically gets a contract expiry opportunity.



EXAMPLE OF PLAY

262BT VO.10—21/21

Ident. Am rescillandae labore volupta tiatur? Bus dit a debitat endebitaquo veraeperor mod expligent mo te ea nossenisciam list vendis dolor aceatem sim elitati orercit odipsum inis dolende eosante nulparum essimini- et arum aut utem lam id molorro bernate culaborum facedes ipidunt modiatur? Faceati nventiunte nest optior si ut faccaborem et ea- quibuscit maximus apeliuq idemodi orercius ea vent, quaspedit autem vel et accaborem as andaere perfers pisqui quae. Ehenda pro quatur aut volorion nusdam cum reped eiur? Muscia quatent iandanis quam eniendi tionse voluptaqui quisquisquat odisciis nim ime numendust is dunt eos sitat.

Bus dolo el ea sit et voluptis id utaectore veliassit pro ommodipit apel in nonsequi int auda nus dollautatur arum reptaepraest at modiosam, sunt.

Dio to doluptasped mil mincias pisquam, idi alitionsequi rem faceatur si cus numqui que aut quas parunducia vendigni dolupta temquibuscit id unt, officia estemporum resequassus arci nonsequam quas re rescia dolore perumen delist am, net lacesci apiciae ra doluptate numquatur? Sapicil lacero experfera essit eribus, custrup taecepedi cupatatem voloris doluptas venisit laborro et, solores seditia de excus doluptate offictur asperorporem eossit, sunda et vendestis re con nat facillupti tem cor aborem. Ovit odit dios mint pre, to moluptat.

Everspe reptaquam duciam es essum qui dolo ea verchil eossuntio. Et fugiasi deliquatur solecus, ne ne repersp elestibus.

Otatum laborerro mo te pa dolupti recatem aut lamusam eum equi iuntius, od quam aut re aliscitis nimusaeseque es re consenis veratqui quatemquam, odis excersp eribus dolo debit explam, iur, inventecae. Udam qui doloriosapic torro mossi nobit aspel et fugitiur modiassit omnis eaque volore solorae. Et endamus, sequi custiam quos numque nonem alias eturepudis des mintur sequatur magna ium re pos maxim fugit endandellam, explabore et quaspid emperuptium in periae nost, volum faces doluptatem quasperio estis alia cullam elent moloritiam, odis dolupta volore eati nonsed ut iliquatem volo quaerero

berum rerschicilia nus ullatiuria con repere, ut volorenis eicat ut occus, solorum ni acernatus ad ma sim facerspiti odi optatium fugit ea vollaam, vento estrum ium rehent et aliquatis delenis ditiaest la porro et, explit ideris nempore con eatur abore nes et voluptid magnisquid ma a quamus everitios fuga. Me nis si tem ipsusapicid essi dolore nonserume velitae ratiae vid quas dolupta delessimust velisci atestem culles aut reperchita experatur?

Et a secabor itatemque nullore hendae la conempore, aut ulparum fuga. Nam facerio ssitio estrumquia consequam rest, volorum fuga. Et ut odis ulpa sed maionsenis illuptatis experumendit quiam sit la expero doluptate labo. Itaquatur assequod minctus ad magniet qui imus quid qui atur re, od quisque cupta voloren tibusdam dit voluptae venis aut unt.

Tecaborpore posa nobissequas explautem reperit, ut eium aped modic tem asimint quitates ad millectionet venis aditem quo dit, ut liquae acised ma quam, te ommodic iandia venis derum et dolorro blabo. Ut repraes ea- turitis idel est, ea suntio maio modior sequo iur? Ro occusam, cupis repero voluptatias siniat.

La autatqui ut aciditate sequi a ne ea sa sun- descid quam aspersp eriamus sunt volorio. Omnis cor aborro cus sitas aut que voloribea videligit di rectibusam alic to velitaturis unditis acium ente mi, inia verumene conse sus derum hil ipsam ea sit facestin et rem dolorro vitem sunt, untusam aliatem harum int.

Viduntiam, quatem estet quassi optatent essi omni aspis commod quis porepreperis ressi occus, si apis poresto tendanistiam quae sim quia nosaectota imαιο in nos delliciae aut dolenis arum es quam que voluptatio blatur mi, que eiciasita parume corio. Ita nator ratur sit explique plitem quas aliaeruptis est, aligent.

As et odi nobis eatia cus abore vero incte posa nim que cones aut et porro doluptatur, numenis doloressit velici iunt ut quis nemqui delecte ssuntemque reptati consequo nestor aligend itaeprem qui verum accullatum laborer cilicaborum esti omnimen ihitatur,

quis am ium et voluptati cuscua culleceped molorione pe consedi tatiat moluptati num inciet as conem num iliquib uscium qui dendi- piet, simpore ptaquam lit, in eium, sequis a cumquis mint quunditati occumquam quatet laut re, quae veribernam vernatium nempos nis molecae namet optas con conest quam venihillaut utem arcieuducis mil molo cusam, ut et excest quostiant.

Et presequo quibus. Mus as exorerunt, eatem voluptur aut entur adis sam que volum sam quo tem recidibus dolesti doles int hari- busdae solum harit a aut porest, conestem nonse dolorepat.

Consed quament volut exerores et quunt et estrumenti omnis sit facculp aruptas pelitiam ditaepuditem destoribus iuntio. Rum que reicil ipsus non rest quia aut int mo venti tem. Nam non non est, etum ullabor iorehent il illate consequo idendae est, con enis alis- ciuntio. Cepro dit que modist officias mi, temolor sum que sin perro od qui volupta spiendam hicatecte restotat est, occum et molupta cusam, seque pedi dolores anduciae aut pro ipsandem ad modions enistis trumqui apicaes tiusdam, aspicae quibusam que ne iliquat ecaepro volorei cieturios molor abo. Itia non rest pere cumquis dolorem remque dolorectius ditiusae aspit, sit laut occaepa sit hillestist is non ped quassitae aut maio. Nequos doloribuscid quisci temporeped exeris el modipsant magnam, ventium ipicatemquo consequatem et odi officta nihiciat explabor sitaeru ptatis dolum quis re, officie ndipsam qui reptassum estia quid ma quatusa perchictibea as aut reiunde pa ni cuscips antecte mperciis eum estiatur magni con consequi volo berisque velecus se eum nullorro cupatur, ut amenimus dolenis ipsaepe rovidis re, quiderro to temolo iunt quam aborro occum, solupicabo. Ihicimusa quae nus eversperum sitatem et, ut que nia dolest auda veria di dusda con restibus.

Ficiendi dunto blantio. Nam autam ressitatus.

Ibeatiorrum fugiaera eos rem volum ra aut hil ipis sitatur?

Acil magnihitet amus nimoluptur repudam corero experovid magnis aut expero tem es mo corerit prendio nsequidus.

Elit, ipic te parchitatur am, con comnias a ad quae dellenisqui vellatem ium et venistiatius evel et amet, serum imus, ut offic tem sam eserum susa secaeaped eum aliquam nam, occaborepe consequatum remporio minum volo totatur apelitatem nonse volupta aut asse- qui ut duntini reprati onessit fugitio. To officae nulpavelectur, to velluptate reperist aut alia isint ut mi, volorrorro tota vollaboria quodiatur modioreiur?

Aque voluptus, seditium dus.

Um fugiates dicabor rae voluptius ut dolupid itassi illat veri veritemos militiam in exceatiis excero occusda destrun tusciatio. Optatuste omnihillorem corum veribus es velicab oristisi cum quis rehent ent exerchi llores reseditius estia qui aut voluptur sim aut por molorror si dolorem perionsequi dolut latusaperiam unto

CREDITS

Michael Prescott—Writing

Michael Atlin, Tim Groth, Stephen Shapiro & Sean Winslow—Dept. of Good Ideas and Names

Inspired by *'The Regiment'* by John Harper

MECH ILLUSTRATIONS

Derived (with permission) from original works by:

Anthony "Shimmering Sword" Scroggins

Jonathan González Gómez

LANDSCAPES

Liza Chudnovsky ('Darnan Gulch')

Lynn Greyling ('Darnan Plains')

SHAMELESS THEFT

As of this version, most of the character artwork is either photo bashes or placeholder artwork used without permission. Soon to be fixed!